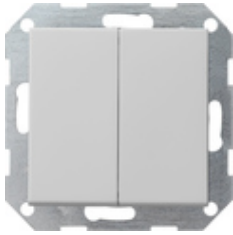






## Trykkbryter 10 AX 250 V~med dobbel rett vippe Kronevender



Spesifikasjon	Bestillings nr.	PE	PS	EAN
 renhvit glans	2860 201	1/5	01	4010337065876
 antrasitt	2860 28	1/5	11	4010337029397
 aluminiumsfarget	2860 26	1/5	11	4010337029380
 svart matt	2860 005	1/5	11	4010337038023
 grå matt	2860 015	1/5	11	4010337087199
 rustfritt stål	2860 600	1/5	11	4010337021223

### Tekniske data

#### Monteringsdybde

- 2860 ...:	28 mm
- 2861 ...:	32 mm

#### Tilkoblingstverrsnitt

- for stive og fleksible ledere opptil:	2,5 mm <sup>2</sup>
---	---------------------

#### Nominell effekt

- LEDi/CFLi:	100 W
--------------	-------

## **Merknader**

- Avhengig av tilgjengelighet.

---