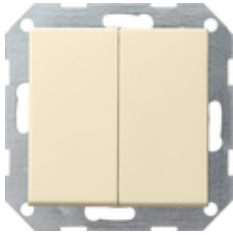










**Tastschakelaar 10 AX 250 V~ met wip 2-voudig**  
**Wisselschakelaar 2-voudig**



Specificatie	Art. nr.	VE	EUR/stuk excl. BTW	PS	EAN
 crème wit glanzend	0128 01	1/5	40,02	01	4010337128014
 zuiver wit glanzend	0128 03	1/5	40,02	01	4010337128038
 zuiver wit mat	0128 27	1/5	40,02	01	4010337128274
 antraciet	0128 28	1/5	40,54	11	4010337128281
 kleur aluminium	0128 26	1/5	43,74	11	4010337128267
 zwart mat	0128 005	1/5	43,74	11	4010337038030
 grijs mat	0128 015	1/5	43,74	11	4010337077176
 edelstaal	0128 600	1/5	50,74	11	4010337021797

**Technische gegevens**

Inbouwdiepte  
- 0125 ...: 28 mm

- 0128 ...:	32 mm
Aansluitingdoorsnede - voor stijve en flexibele geleiders tot:	2.5mm <sup>2</sup>
Nominaal vermogen - LEDi/ CFLi:	100 W

---