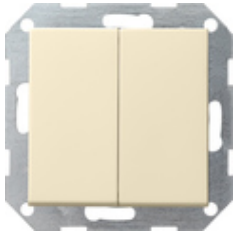










Tastchakelaar 10 AX 250 V~ met wip 2-voudig Serieschakelaar



Specificatie	Art. nr.	VE	EUR/stuk excl. BTW	PS	EAN
 crème wit glanzend	0125 01	1/5	28,37	01	4010337125013
 zuiver wit glanzend	0125 03	1/5	28,37	01	4010337125037
 zuiver wit mat	0125 27	1/5	28,37	01	4010337125273
 antraciet	0125 28	1/5	28,88	11	4010337125280
 kleur aluminium	0125 26	1/5	32,08	11	4010337125266
 zwart mat	0125 005	1/5	32,08	11	4010337038016
 grijs mat	0125 015	1/5	32,08	11	4010337077138
 edelstaal	0125 600	1/5	39,15	11	4010337021780

Technische gegevens

Inbouwdiepte
- 0125 ...: 28 mm

- 0128 ...:	32 mm
Aansluitingdoorsnede - voor stijve en flexibele geleiders tot:	2.5mm ²
Nominaal vermogen - LEDi/ CFLi:	100 W

Aanwijzingen

- Volgens beschikbaarheid.
