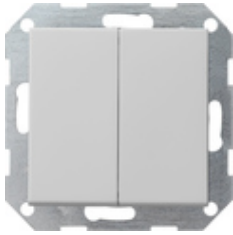









**Interruttore a pulsante 10 AX 250 V~con bilanciere diritto 2 moduli  
Doppio interruttore**



Specifica	Cod. ord.	UI	EUR/pezzo IVA esclusa	SP	EAN
 bianco puro brillante	2860 201	1/5	28,37	01	4010337065876
 bianco puro satinato	2860 27	1/5	28,37	01	4010337029373
 antracite	2860 28	1/5	28,88	11	4010337029397
 color alluminio	2860 26	1/5	32,08	11	4010337029380
 nero opaco	2860 005	1/5	32,08	11	4010337038023
 grigio opaco	2860 015	1/5	32,08	11	4010337087199
 acciaio inox	2860 600	1/5	39,15	11	4010337021223

**Dati tecnici**

Profondità di montaggio

- 2860 ...: 28 mm  
- 2861 ...: 32 mm

Sezione dei conduttori

- per conduttori rigidi e flessibili fino a: 2,5mm<sup>2</sup>

Potenza nominale

- LEDi/CFLi: 100 W

Le illustrazioni sono simili all'originale e possono differire da esso.  
Prezzi validi per Italia con aggiornamento prezzi 11/23.

---

## Avvisi

- Soggetto a disponibilità.

---