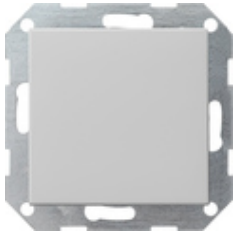










Interruttore a pulsante 10 AX 250 V~ con bilanciere Deviatore universale



Specifica	Cod. ord.	UI	EUR/pezzo IVA esclusa	SP	EAN
 bianco crema brillante	0126 01	1/5	17,70	01	4010337126010
 bianco puro brillante	0126 03	1/5	17,70	01	4010337126034
 bianco puro satinato	0126 27	1/5	17,70	01	4010337126270
 antracite	0126 28	1/5	18,20	11	4010337126287
 color alluminio	0126 26	1/5	21,40	11	4010337126263
 nero opaco	0126 005	1/5	21,40	11	4010337037965
 grigio opaco	0126 015	1/5	21,40	11	4010337077145
 acciaio inox	0126 600	1/5	28,42	11	4010337021742

Dati tecnici

Profondità di montaggio: 28 mm

Sezione dei conduttori
- per conduttori rigidi e flessibili fino a: 2,5mm²

Le illustrazioni sono simili all'originale e possono differire da esso.
Prezzi validi per Italia con aggiornamento prezzi 11/23.

Potenza nominale

- LEDi/CFLi:

100 W

Avvisi

- Soggetto a disponibilità.
