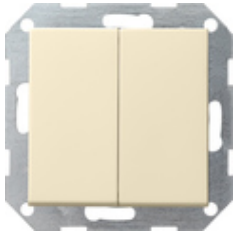










**Interruttore a pulsante 10 AX 250 V~ con bilanciere 2 moduli  
Doppio interruttore**

Specifica	Cod. ord.	UI	EUR/pezzo IVA esclusa	SP	EAN
 bianco crema brillante	0125 01	1/5	28,37	01	4010337125013
 bianco puro brillante	0125 03	1/5	28,37	01	4010337125037
 bianco puro satinato	0125 27	1/5	28,37	01	4010337125273
 antracite	0125 28	1/5	28,88	11	4010337125280
 color alluminio	0125 26	1/5	32,08	11	4010337125266
 nero opaco	0125 005	1/5	32,08	11	4010337038016
 grigio opaco	0125 015	1/5	32,08	11	4010337077138
 acciaio inox	0125 600	1/5	39,15	11	4010337021780

**Dati tecnici**Profondità di montaggio  
- 0125 ...:

28 mm

- 0128 ...: 32 mm

Sezione dei conduttori  
- per conduttori rigidi e flessibili fino a: 2,5mm<sup>2</sup>

Potenza nominale  
- LEDi/CFLi: 100 W

---

## Avvisi

- Soggetto a disponibilità.

---