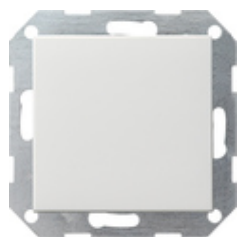









Interruttore a pulsante 10 AX 250 V~con bilanciere diritto Invertitore



Specifica	Cod. ord.	UI	EUR/pezzo IVA esclusa	SP	EAN
 bianco puro brillante	0123 201	1/5	28,29	01	4010337052708
 bianco puro satinato	0123 27	1/5	28,29	01	4010337029342
 antracite	0123 28	1/5	28,85	11	4010337029366
 color alluminio	0123 26	1	32,03	11	4010337029359
 nero opaco	0123 005	1	32,03	11	4010337037996
 grigio opaco	0123 015	1	32,03	11	4010337077114
 acciaio inox	0123 600	1	39,06	11	4010337021254

Dati tecnici

Profondità di montaggio:	28 mm
Sezione dei conduttori - per conduttori rigidi e flessibili fino a:	2,5mm ²
Potenza nominale - LEDi/CFLi:	100 W

Avvisi

- Soggetto a disponibilità.
