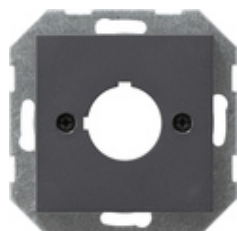









Copertura con anello portante per l'alloggiamento di apparecchi di comando e di segnalazione (Ø 22,5 mm)



Specifica	Cod. ord.	UI	EUR/pezzo IVA esclusa	SP	EAN
 bianco crema brillante	0272 01	1	12,87	01	4010337272014
 bianco puro brillante	0272 03	5	12,87	01	4010337272038
 bianco puro satinato	0272 27	5	12,87	01	4010337272274
 antracite	0272 28	1	15,70	11	4010337272281
 color alluminio	0272 26	1	19,97	11	4010337272267
 nero opaco	0272 005	1	19,97	11	4010337036708
 grigio opaco	0272 015	1	19,97	11	4010337078777

Avvisi

- Solo per fissaggio a viti.
- Per pulsanti, pulsanti ad urto, pulsanti a chiave, pulsanti girevoli, pulsanti luminosi, pulsanti a fungo, selettori e spie luminose, ad es. di marca Lumitas, Rafi, Elan, Fanal.