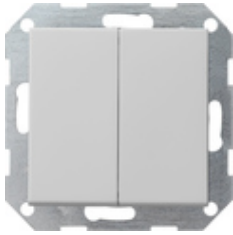









**Interrupteur-poussoir 10 AX 250 V~avec bascule droite 2x  
Interrupteur de série**



Spécification	Réf.	UV.	EUR/pièce HTVA	SP	EAN
 blanc brillant	2860 201	1/5	28,37	01	4010337065876
 blanc satiné	2860 27	1/5	28,37	01	4010337029373
 anthracite	2860 28	1/5	28,88	11	4010337029397
 teinte alu	2860 26	1/5	32,08	11	4010337029380
 noir mat	2860 005	1/5	32,08	11	4010337038023
 gris mat	2860 015	1/5	32,08	11	4010337087199
 acier inoxydable	2860 600	1/5	39,15	11	4010337021223

**Caractéristiques techniques**

Profondeur d'encastrement

- 2860 ... 28 mm  
- 2861 ... 32 mm

section de raccordement

- pour conducteurs rigides et flexibles 2,5mm<sup>2</sup>  
jusqu'à:

Puissance nominale  
- LEDi/ CFLi:

100 W

---

## Indications

- A condition que la livraison soit possible.

---