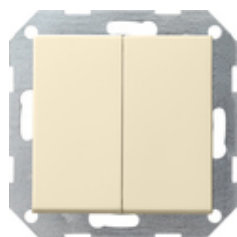










Interrupteur-poussoir 10 AX 250 V~ avec bascule 2x Commutateur va-et-vient double



Spécification	Réf.	UV.	EUR/pièce HTVA	SP	EAN
 blanc crème brillant	0128 01	1/5	40,02	01	4010337128014
 blanc brillant	0128 03	1/5	40,02	01	4010337128038
 blanc satiné	0128 27	1/5	40,02	01	4010337128274
 anthracite	0128 28	1/5	40,54	11	4010337128281
 teinte alu	0128 26	1/5	43,74	11	4010337128267
 noir mat	0128 005	1/5	43,74	11	4010337038030
 gris mat	0128 015	1/5	43,74	11	4010337077176
 acier inoxydable	0128 600	1/5	50,74	11	4010337021797

Caractéristiques techniques

Profondeur d'encastrement
- 0125 ...: 28 mm

- 0128 ...:	32 mm
section de raccordement - pour conducteurs rigides et flexibles jusqu'à:	2,5mm ²
Puissance nominale - LEDi/ CFLi:	100 W

Indications

- A condition que la livraison soit possible.
