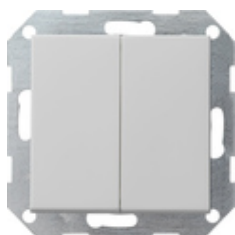










Interrupteur-poussoir 10 AX 250 V~ avec bascule 2x Interrupteur de série



Spécification	Réf.	UV.	EUR/pièce HTVA	SP	EAN
 blanc crème brillant	0125 01	1/5	28,37	01	4010337125013
 blanc brillant	0125 03	1/5	28,37	01	4010337125037
 blanc satiné	0125 27	1/5	28,37	01	4010337125273
 anthracite	0125 28	1/5	28,88	11	4010337125280
 teinte alu	0125 26	1/5	32,08	11	4010337125266
 noir mat	0125 005	1/5	32,08	11	4010337038016
 gris mat	0125 015	1/5	32,08	11	4010337077138
 acier inoxydable	0125 600	1/5	39,15	11	4010337021780

Caractéristiques techniques

Profondeur d'encastrement
- 0125 ...: 28 mm

- 0128 ...:	32 mm
section de raccordement - pour conducteurs rigides et flexibles jusqu'à:	2,5mm ²
Puissance nominale - LEDi/ CFLi:	100 W

Indications

- A condition que la livraison soit possible.
