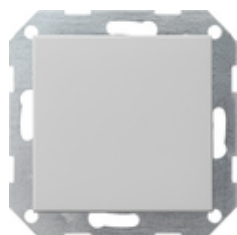









## Interrupteur-poussoir 10 AX 250 V~avec bascule droite Interrupteur va-et-vient universel



Spécification	Réf.	UV.	EUR/pièce HTVA	SP	EAN
 blanc brillant	0121 201	1/5	17,70	01	4010337052692
 blanc satiné	0121 27	1/5	17,70	01	4010337029311
 anthracite	0121 28	1/5	18,20	11	4010337029335
 teinte alu	0121 26	1	21,40	11	4010337029328
 noir mat	0121 005	1	21,40	11	4010337037972
 gris mat	0121 015	1	21,40	11	4010337077091
 acier inoxydable	0121 600	1/5	28,42	11	4010337021261

### Caractéristiques techniques

Profondeur d'encastrement:	28 mm
section de raccordement - pour conducteurs rigides et flexibles jusqu'à:	2,5mm <sup>2</sup>
Puissance nominale - LEDi/ CFLi:	100 W

---

## Indications

- A condition que la livraison soit possible.

---