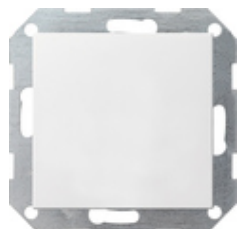










Regulador de edificios con interfaz de pulsador de 4 elementos para KNX



Especificación	Ref.	UE	SP	EAN
 blanco crema brillante	2101 01	1	06	4010337048183
 blanco brillante	2101 03	1	06	4010337048190
 blanco mate	2101 27	1	06	4010337048244
 antracita	2101 28	1	06	4010337048251
 color aluminio	2101 26	1	06	4010337048237
 negro mate	2101 005	1	06	4010337037248
 gris mate	2101 015	1	06	4010337083030
 acero inoxidable	2101 600	1	06	4010337021513

Datos técnicos

Profundidad de instalación: 23 mm

Notes

- El regulador de objetos no dispone de elementos de control o de indicación.
