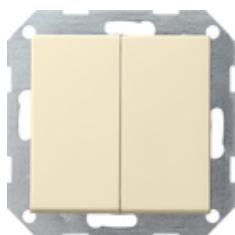










**Interruptor pulsador 10 AX de 250 V~ con tecla basculante de 2 elementos
Conmutador de 2 elementos**



Especificación	Ref.	UE	SP	EAN
 blanco crema brillante	0128 01	1/5	01	4010337128014
 blanco brillante	0128 03	1/5	01	4010337128038
 blanco mate	0128 27	1/5	01	4010337128274
 antracita	0128 28	1/5	11	4010337128281
 color aluminio	0128 26	1/5	11	4010337128267
 negro mate	0128 005	1/5	11	4010337038030
 gris mate	0128 015	1/5	11	4010337077176
 acero inoxidable	0128 600	1/5	11	4010337021797

Datos técnicos

Profundidad de instalación
- 0125 ...:

28 mm

- 0128 ...:	32 mm
Sección de conexión - para conductores rígidos y flexibles de hasta:	2,5 mm ²
Potencia nominal - LEDi/ CFLi:	100 W

Notes

- Sujeto a disponibilidad.
