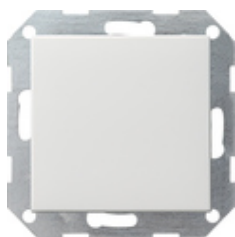










**Interruptor pulsador 10 AX 250 V~ con tecla basculante**  
**Interruptor en cruz**



Especificación	Ref.	UE	SP	EAN
 blanco crema brillante	0127 01	1/5	01	4010337127017
 blanco brillante	0127 03	1/5	01	4010337127031
 blanco mate	0127 27	1/5	01	4010337127277
 antracita	0127 28	1/5	11	4010337127284
 color aluminio	0127 26	1/5	11	4010337127260
 negro mate	0127 005	1/5	11	4010337037989
 gris mate	0127 015	1/5	11	4010337077169
 acero inoxidable	0127 600	1/5	11	4010337021759

**Datos técnicos**

Profundidad de instalación: 28 mm

Sección de conexión  
- para conductores rígidos y flexibles de hasta: 2,5 mm<sup>2</sup>

Las figuras son similares y pueden diferenciarse del original.

Potencia nominal  
- LEDi/ CFLi:

100 W

---

## Notes

- Sujeto a disponibilidad.

---