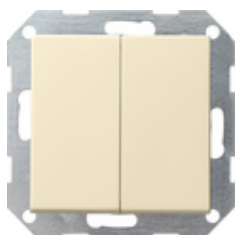










**Interruptor pulsador 10 AX de 250 V~ con tecla basculante de 2 elementos
Interruptor en serie**



Especificación	Ref.	UE	SP	EAN
 blanco crema brillante	0125 01	1/5	01	4010337125013
 blanco brillante	0125 03	1/5	01	4010337125037
 blanco mate	0125 27	1/5	01	4010337125273
 antracita	0125 28	1/5	11	4010337125280
 color aluminio	0125 26	1/5	11	4010337125266
 negro mate	0125 005	1/5	11	4010337038016
 gris mate	0125 015	1/5	11	4010337077138
 acero inoxidable	0125 600	1/5	11	4010337021780

Datos técnicos

Profundidad de instalación
- 0125 ...:

28 mm

- 0128 ...:	32 mm
Sección de conexión - para conductores rígidos y flexibles de hasta:	2,5 mm ²
Potencia nominal - LEDi/ CFLi:	100 W

Notes

- Sujeto a disponibilidad.
