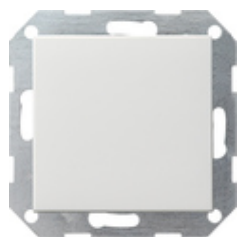









**Interruptor pulsador 10 AX de 250 V~con tecla basculante recta**  
**Interruptor de conmutación universal**



Especificación	Ref.	UE	SP	EAN
 blanco brillante	0121 201	1/5	01	4010337052692
 blanco mate	0121 27	1/5	01	4010337029311
 antracita	0121 28	1/5	11	4010337029335
 color aluminio	0121 26	1	11	4010337029328
 negro mate	0121 005	1	11	4010337037972
 gris mate	0121 015	1	11	4010337077091
 acero inoxidable	0121 600	1/5	11	4010337021261

**Datos técnicos**

Profundidad de instalación:	28 mm
Sección de conexión - para conductores rígidos y flexibles de hasta:	2,5 mm <sup>2</sup>
Potencia nominal - LEDi/ CFLi:	100 W

Las figuras son similares y pueden diferenciarse del original.

---

## Notes

- Sujeto a disponibilidad.

---