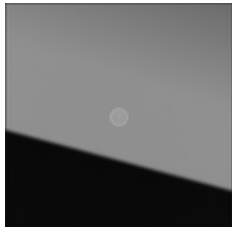
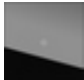


System 106 camera module



Specification	Order No.	Packing unit	£/piece without VAT	PS	EAN
 black glass	5561 000	1	994.34	10	4010337022497

The Gira System 106 is an installation system made of metal in a puristic and elegant frameless design, based on basic measurements of 106.5 × 106.5 mm. With the modular door intercom in Gira System 106, hospitality begins even before you reach the front door. All the functions are presented in a harmonious overall appearance, from the call button module, intercom module, and camera module, up to the info and blank module. In the dark, backlit call buttons with inscription space ensure good legibility and an attractive appearance.

Individually adaptable modular system

The System 106 can be used in family homes or apartment buildings, as well as in office buildings, industrial properties, and hotels. The modular design enables the system's size, design, and functionality to be individually adapted to the respective requirements. Expansions and changes are possible at any time by easily exchanging the modules.

With this system, it is also possible to exchange the fronts only. This means that the appearance of the system can be changed from e.g. traffic white to a stainless steel surface at a later stage, without having to exchange the electronic units.

High-quality materials

The modules are frameless with design fronts made of genuine materials, available in two brushed stainless steel versions (V2A and V4A), anodised aluminium C-0, and a metal alloy lacquered in traffic white (RAL 9016): all robust materials which ensure durability. The camera and DIN 18040 display module feature a black glass cover.

Easy and phased installation

The system can be installed in phases, in parallel to the progress of building work. In this way, it is possible to initially install only the lower part of a surface-mounted housing during construction of the shell; cables and modules can then be added when they are needed.

Individual inscription options

Call button modules and info modules can be labelled individually via the Gira inscription service.

Features

- A high-quality camera with a high degree of light sensitivity is concealed behind the exchangeable black glass plate. Due to a detection angle of 100°, the user maintains an overview of what is happening at the front door.

Technical data

Power supply	
- System:	via flat ribbon cable, 10-pole
- up to 2 camera modules:	via Video control device
- 3 or more camera modules:	additionally via power supply for door communication DC 24 V 300 mA
Power consumption	
- Maximum:	2.7 W (camera active in night mode)
- Stand-by mode:	80 mW
Connections	
- System (flat ribbon cable, 10-pole):	2 x connector strip
- Video (analogue):	1 x connector strip
Camera sensor	
- Type:	CMOS 1/3"
- Resolution:	2 MP
Visible range of detection:	100°
Pictured detection range (on screen)	
- Rotary knob at position 9:	100°
- at normal 4:3 output:	85°
Colour system:	PAL
Video signal resolution:	Analogue CVBS, 50Hz/625 lines
Day mode to night mode switchover threshold:	1 lx
Light sensitivity in B/W operation:	0.1 lx
Electronic shutter speed::	up to 1/60 000 s
Recommended installation height:	1.50 m
Ambient temperature:	-25 °C to +70 °C
Protection class:	IP54

Dimensions in mm

B 106,5 H 106,5 T 28,7
