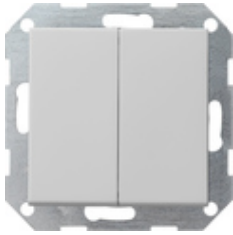









**Pushbutton switch 10 AX 250 V~with upright rocker, 2-gang  
Series switch**



Specification	Order No.	Packing unit	£/piece without VAT	PS	EAN
 pure white glossy	2860 201	1/5	25.53	01	4010337065876
 pure white matt	2860 27	1/5	25.53	01	4010337029373
 anthracite	2860 28	1/5	25.99	11	4010337029397
 colour aluminium	2860 26	1/5	28.87	11	4010337029380
 black matt	2860 005	1/5	28.87	11	4010337038023
 grey matt	2860 015	1/5	28.87	11	4010337087199
 stainless steel	2860 600	1/5	35.24	11	4010337021223

**Technical data**

Installation depth

- 2860 ...	28 mm
- 2861 ...	32 mm

Connection cross section

- For rigid and flexible conductors up to:	2.5 mm <sup>2</sup>
--------------------------------------------	---------------------

Rated output  
- LEDi/CFLi:

100 W

---

## Notes

- Subject to availability.

---