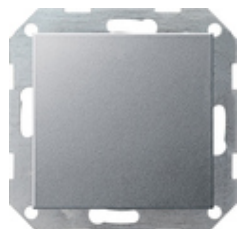










Object controller with button interface, 4-gang for KNX



Specification	Order No.	Packing unit	£/piece without VAT	PS	EAN
 cream white glossy	2101 01	1	137.43	06	4010337048183
 pure white glossy	2101 03	1	137.43	06	4010337048190
 pure white matt	2101 27	1	137.43	06	4010337048244
 anthracite	2101 28	1	139.27	06	4010337048251
 colour aluminium	2101 26	1	141.09	06	4010337048237
 black matt	2101 005	1	141.09	06	4010337037248
 grey matt	2101 015	1	141.09	06	4010337083030
 stainless steel	2101 600	1	142.93	06	4010337021513

Technical data

Installation depth: 23 mm

Connection cross section
- J-Y(St)Y: 2 × 2 × 0.8 mm²

Illustrations are similar and may deviate from originals.
Prices valid for United Kingdom with prices valid 01/25.

Notes

- The object controller has no operating or display elements.
-