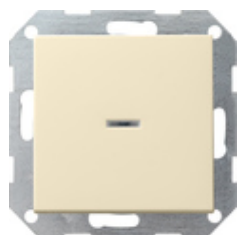











**Pushbutton indicator switch 10 AX 250 V~ with rocker
Universal 1-way/2-way switch**



Specification	Order No.	Packing unit	PS	EAN
 cream white glossy	0136 01	1/5	01	4010337136019
 pure white glossy	0136 03	1/5	01	4010337136033
 pure white matt	0136 27	1/5	01	4010337136279
 anthracite	0136 28	1/5	11	4010337136286
 colour aluminium	0136 26	1/5	11	4010337136262
 black matt	0136 005	1/5	11	4010337037941
 grey matt	0136 015	1/5	11	4010337077190
 stainless steel	0136 600	1/5	11	4010337021766
 bronze	0136 603	1/5	11	4010337106081

Technical data

Installation depth:	28 mm
Connection cross section - For rigid and flexible conductors up to:	2.5 mm ²
Rated output - LEDi/CFLi:	100 W

Notes

- Can also be connected to be illuminated.
-

Scope of supply

- A neon lamp element 230 V~, 1.5 mA is included in the scope of supply.
-