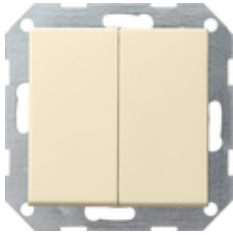










**Pushbutton switch 10 AX 250 V~ with rocker, 2-gang  
2-way switch, 2-gang**



Specification	Order No.	Packing unit	PS	EAN
 cream white glossy	0128 01	1/5	01	4010337128014
 pure white glossy	0128 03	1/5	01	4010337128038
 pure white matt	0128 27	1/5	01	4010337128274
 anthracite	0128 28	1/5	11	4010337128281
 colour aluminium	0128 26	1/5	11	4010337128267
 black matt	0128 005	1/5	11	4010337038030
 grey matt	0128 015	1/5	11	4010337077176
 stainless steel	0128 600	1/5	11	4010337021797

**Technical data**

Installation depth  
- 0125 ...: 28 mm

# GIRA Data sheet

catalogue.gira.com

© Copyright by  
Gira Giersiepen GmbH & Co. KG  
All rights reserved

www.gira.com

- 0128 ...:	32 mm
Connection cross section	
- For rigid and flexible conductors up to:	2.5 mm <sup>2</sup>
Rated output	
- LEDi/CFLi:	100 W

---