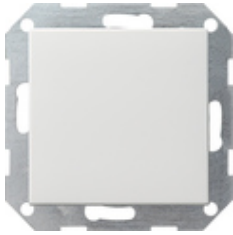










**Pushbutton switch 10 AX 250 V~ with rocker
Universal 1-way/2-way switch**



Specification	Order No.	Packing unit	PS	EAN
 cream white glossy	0126 01	1/5	01	4010337126010
 pure white glossy	0126 03	1/5	01	4010337126034
 pure white matt	0126 27	1/5	01	4010337126270
 anthracite	0126 28	1/5	11	4010337126287
 colour aluminium	0126 26	1/5	11	4010337126263
 black matt	0126 005	1/5	11	4010337037965
 grey matt	0126 015	1/5	11	4010337077145
 stainless steel	0126 600	1/5	11	4010337021742

Technical data

Installation depth: 28 mm

Connection cross section
- For rigid and flexible conductors up to: 2.5 mm²

Illustrations are similar and may deviate from originals.

GIRA Data sheet

catalogue.gira.com

© Copyright by
Gira Giersiepen GmbH & Co. KG
All rights reserved

www.gira.com

Rated output
- LEDi/CFLi:

100 W
