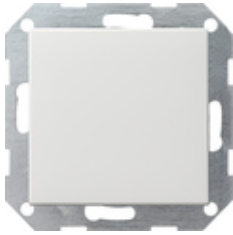











**Pushbutton switch 10 AX 250 V~ with rocker
Intermediate switch**



Specification	Order No.	Packing unit	PS	EAN
 cream white glossy	0127 01	1/5	01	4010337127017
 pure white glossy	0127 03	1/5	01	4010337127031
 pure white matt	0127 27	1/5	01	4010337127277
 anthracite	0127 28	1/5	11	4010337127284
 colour aluminium	0127 26	1/5	11	4010337127260
 black matt	0127 005	1/5	11	4010337037989
 grey matt	0127 015	1/5	11	4010337077169
 stainless steel	0127 600	1/5	11	4010337021759
 bronze	0127 603	1/5	11	4010337106067



brass

0127 604

1/5

11

4010337106074



chrome

0127 605

1/5

11

4010337000853

Technical data

Installation depth: 28 mm

Connections
- for rigid and flexible conductors up to: 2.5 mm²

Rated output
- LEDi/ CFLi: 100 W
