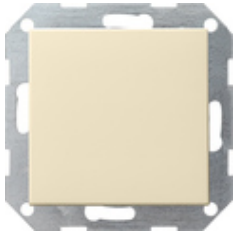










**Pushbutton switch 10 AX 250 V~ with rocker
Intermediate switch**



Specification	Order No.	Packing unit	PS	EAN
 cream white glossy	0127 01	1/5	01	4010337127017
 pure white glossy	0127 03	1/5	01	4010337127031
 pure white matt	0127 27	1/5	01	4010337127277
 anthracite	0127 28	1/5	11	4010337127284
 colour aluminium	0127 26	1/5	11	4010337127260
 black matt	0127 005	1/5	11	4010337037989
 grey matt	0127 015	1/5	11	4010337077169
 stainless steel	0127 600	1/5	11	4010337021759

Technical data

Installation depth: 28 mm

Connection cross section
- For rigid and flexible conductors up to: 2.5 mm²

Illustrations are similar and may deviate from originals.

Rated output
- LEDi/CFLi:

100 W

Notes

- Subject to availability.
