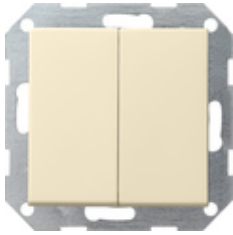










**Pushbutton switch 10 AX 250 V~ with rocker, 2-gang  
Series switch**



| Specification   | Order No. | Packing unit | PS | EAN           |
|---|-----------|--------------|----|---------------|
|  cream white glossy | 0125 01   | 1/5          | 01 | 4010337125013 |
|  pure white glossy | 0125 03   | 1/5          | 01 | 4010337125037 |
|  pure white matt   | 0125 27   | 1/5          | 01 | 4010337125273 |
|  anthracite        | 0125 28   | 1/5          | 11 | 4010337125280 |
|  colour aluminium  | 0125 26   | 1/5          | 11 | 4010337125266 |
|  black matt        | 0125 005  | 1/5          | 11 | 4010337038016 |
|  grey matt         | 0125 015  | 1/5          | 11 | 4010337077138 |
|  stainless steel   | 0125 600  | 1/5          | 11 | 4010337021780 |

**Technical data**

Installation depth  
- 0125 ...: 28 mm

# GIRA Data sheet

catalogue.gira.com

© Copyright by  
Gira Giersiepen GmbH & Co. KG  
All rights reserved

www.gira.com

|  |                     |
|--|---------------------|
| - 0128 ...:                                | 32 mm               |
| Connection cross section                   |                     |
| - For rigid and flexible conductors up to: | 2.5 mm <sup>2</sup> |
| Rated output                               |                     |
| - LEDi/CFLi:                               | 100 W               |

---

## Notes

- Subject to availability.

---