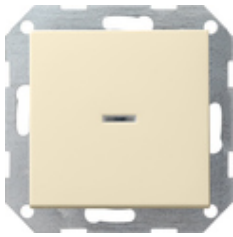


**Pushbutton indicator switch 10 AX 250 V~ with rocker  
Circuit breaker, 2-pole**



Specification	Order No.	Packing unit	PS	EAN
 cream white glossy	0122 01	1/5	01	4010337122012
 pure white glossy	0122 03	1/5	01	4010337122036
 pure white matt	0122 27	1/5	01	4010337122272
 anthracite	0122 28	1/5	11	4010337122289
 colour aluminium	0122 26	1/5	11	4010337122265
 black matt	0122 005	1/5	11	4010337037934
 stainless steel	0122 600	1/5	11	4010337021773

**Technical data**

Installation depth:	28 mm
Connection cross section - For rigid and flexible conductors up to:	2.5 mm <sup>2</sup>
Rated output - LEDi/CFLi:	100 W

---

## Notes

- Can also be connected to be illuminated.
- Subject to availability.

---

## Scope of supply

- A neon lamp element 230 V~, 1.5 mA is included in the scope of supply.
-