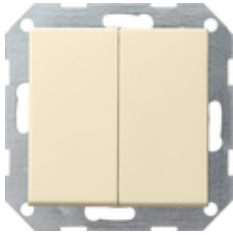










**Tastenschalter 10 AX 250 V~ mit Wippe 2fach
Wechselschalter 2fach**



Spezifikation	Bestell-Nr.	VE	EUR/Stück o. MWSt.	PS	EAN
 Cremeweiß glänzend	0128 01	1/5	40,02	01	4010337128014
 Reinweiß glänzend	0128 03	1/5	40,02	01	4010337128038
 Reinweiß seidenmatt	0128 27	1/5	40,02	01	4010337128274
 Anthrazit	0128 28	1/5	40,54	11	4010337128281
 Farbe Alu	0128 26	1/5	43,74	11	4010337128267
 Schwarz matt	0128 005	1/5	43,74	11	4010337038030
 Grau matt	0128 015	1/5	43,74	11	4010337077176
 Edelstahl	0128 600	1/5	50,74	11	4010337021797

Technische Daten

Einbautiefe
- 0125 ...: 28 mm

- 0128 ...:	32 mm
Anschlussquerschnitt - für starre und flexible Leiter bis:	2,5 mm ²
Nennleistung - LEDi/ CFLi:	100 W

Hinweise

- Lieferfähigkeit vorausgesetzt.
