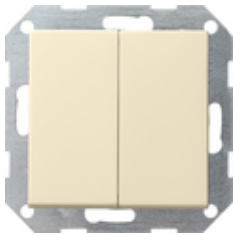











Tastenschalter 10 AX 250 V~ mit Wippe 2fach Serienschalter



Spezifikation	Bestell-Nr.	VE	EUR/Stück o. MWSt.	PS	EAN
 Cremeweiß glänzend	0125 01	1/5	23,40	01	4010337125013
 Reinweiß glänzend	0125 03	1/5	23,40	01	4010337125037
 Reinweiß seidenmatt	0125 27	1/5	23,40	01	4010337125273
 Anthrazit	0125 28	1/5	23,83	11	4010337125280
 Farbe Alu	0125 26	1/5	26,47	11	4010337125266
 Schwarz matt	0125 005	1/5	26,47	11	4010337038016
 Grau matt	0125 015	1/5	26,47	11	4010337077138
 Edelstahl	0125 600	1/5	32,30	11	4010337021780
 Bronze	0125 603	1/5	31,89	11	4010337106012

Technische Daten

Einbautiefe

- 0125 ...:	28 mm
- 0128 ...:	32 mm

Anschlussquerschnitt

- für starre und flexible Leiter bis:	2,5 mm ²
---------------------------------------	---------------------

Nennleistung

- LEDi/ CFLi:	100 W
---------------	-------
