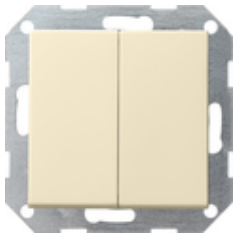










## Tastenschalter 10 AX 250 V~ mit Wippe 2fach Serienschalter



Spezifikation	Bestell-Nr.	VE	EUR/Stück o. MWSt.	PS	EAN
 Cremeweiß glänzend	0125 01	1/5	28,37	01	4010337125013
 Reinweiß glänzend	0125 03	1/5	28,37	01	4010337125037
 Reinweiß seidenmatt	0125 27	1/5	28,37	01	4010337125273
 Anthrazit	0125 28	1/5	28,88	11	4010337125280
 Farbe Alu	0125 26	1/5	32,08	11	4010337125266
 Schwarz matt	0125 005	1/5	32,08	11	4010337038016
 Grau matt	0125 015	1/5	32,08	11	4010337077138
 Edelstahl	0125 600	1/5	39,15	11	4010337021780

### Technische Daten

Einbautiefe  
- 0125 ...: 28 mm

- 0128 ...:	32 mm
Anschlussquerschnitt - für starre und flexible Leiter bis:	2,5 mm <sup>2</sup>
Nennleistung - LEDi/ CFLi:	100 W

---

## Hinweise

- Lieferfähigkeit vorausgesetzt.

---