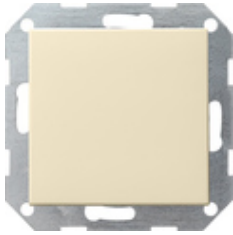











**Tastschalter 10 AX 250 V~ mit Wippe
Universal-Aus-Wechselschalter**



Spezifikation	Bestell-Nr.	VE	EUR/Stück o. MWSt.	PS	EAN
 Cremeweiß glänzend	0126 01	1/5	16,95	01	4010337126010
 Reinweiß glänzend	0126 03	1/5	16,95	01	4010337126034
 Reinweiß seidenmatt	0126 27	1/5	16,95	01	4010337126270
 Anthrazit	0126 28	1/5	17,43	11	4010337126287
 Farbe Alu	0126 26	1/5	20,50	11	4010337126263
 Schwarz matt	0126 005	1/5	20,50	11	4010337037965
 Grau matt	0126 015	1/5	20,50	11	4010337077145
 Edelstahl	0126 600	1/5	27,22	11	4010337021742
 Bronze	0126 603	1/5	26,94	11	4010337106043

Technische Daten

Einbautiefe:	28 mm
Anschlussquerschnitt - für starre und flexible Leiter bis:	2,5 mm ²
Nennleistung - LEDi/ CFLi:	100 W
